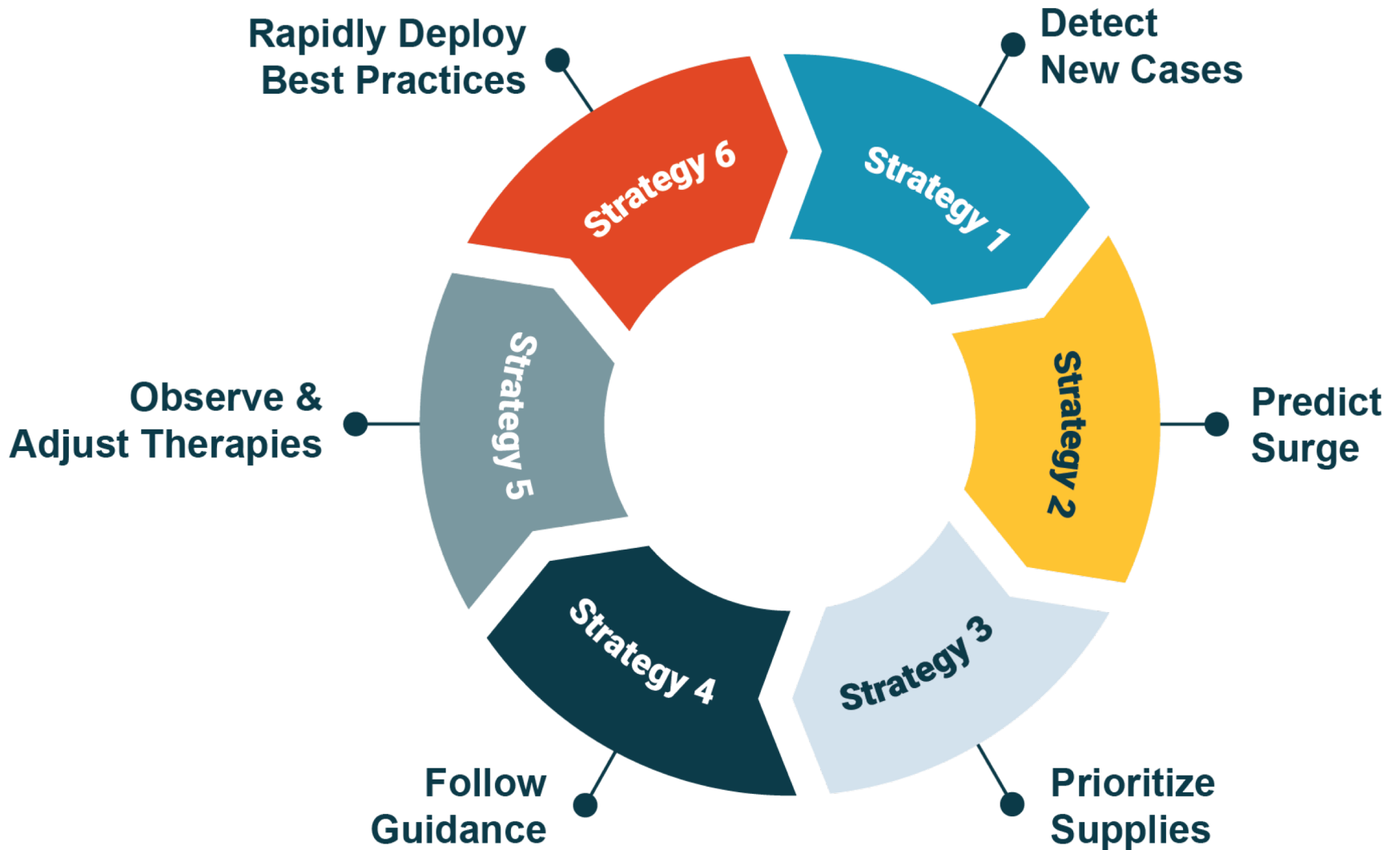




Clinical Response to COVID-19



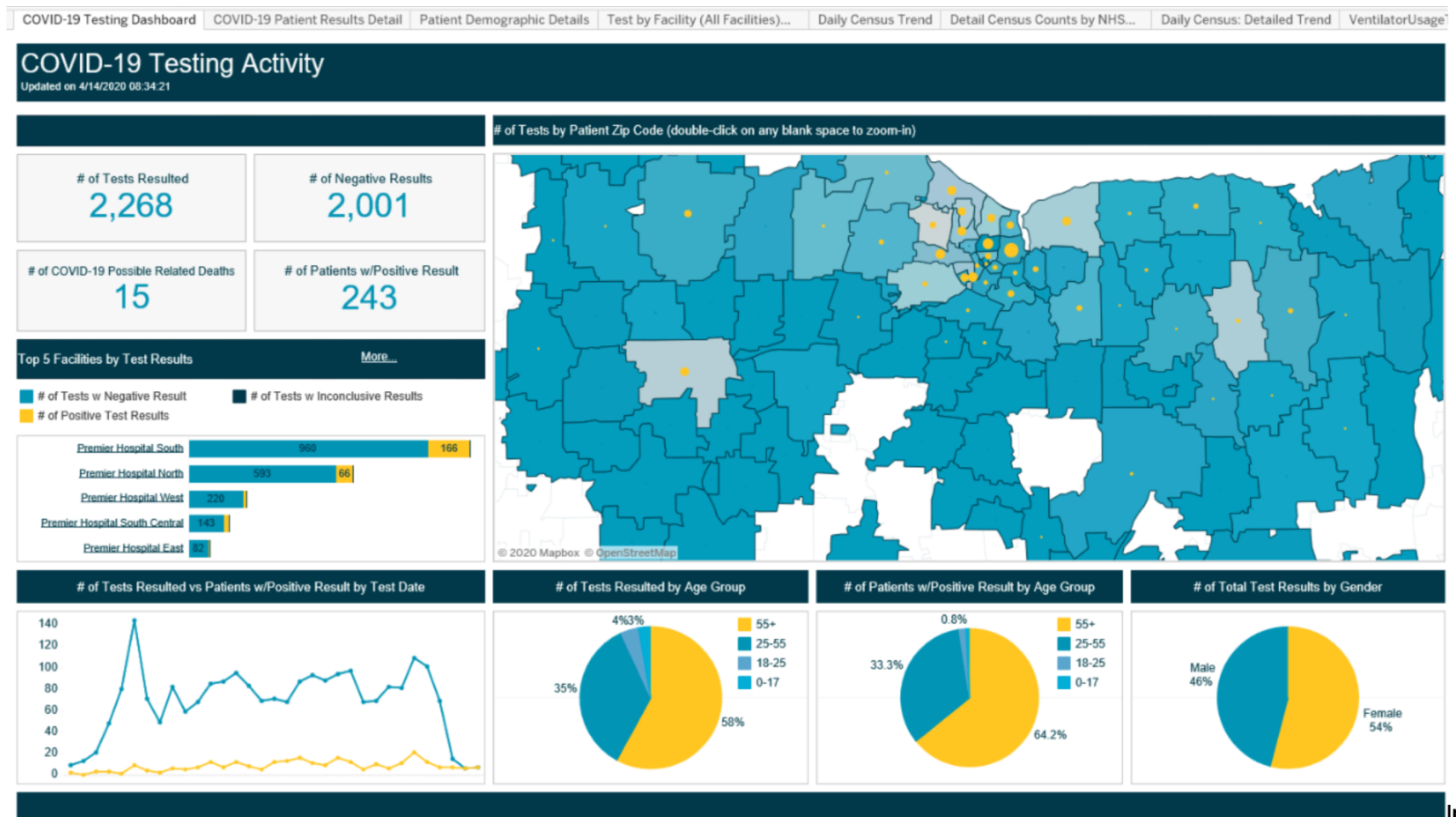
Our Six Strategies of Focus for COVID-19





Create an early warning system before patients are hospitalized.

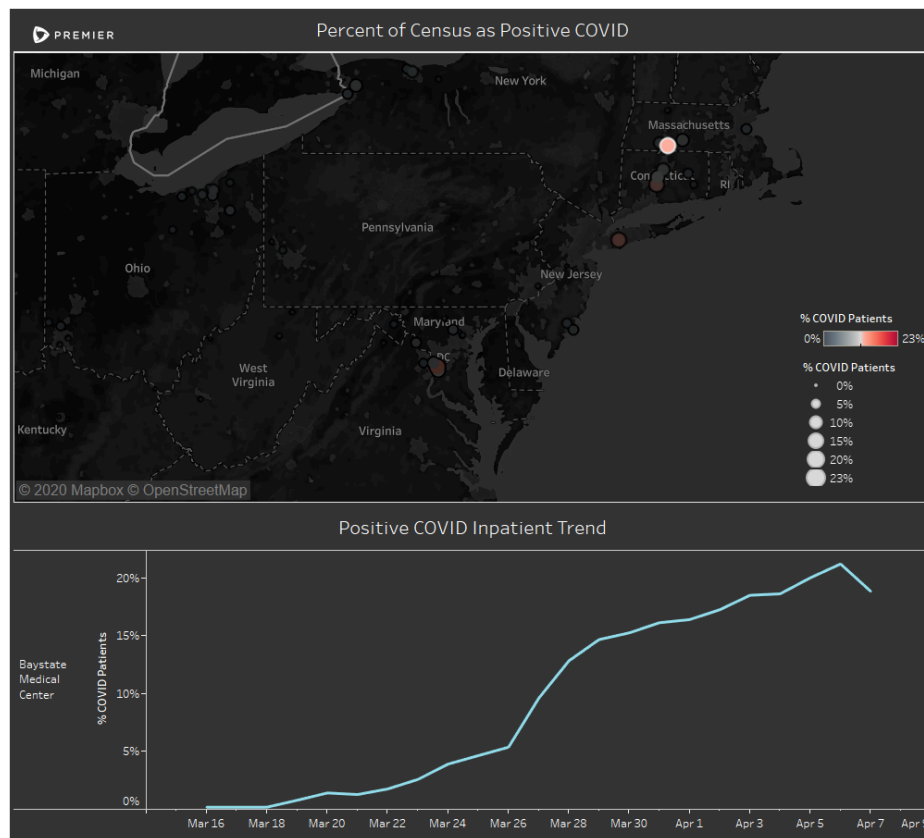
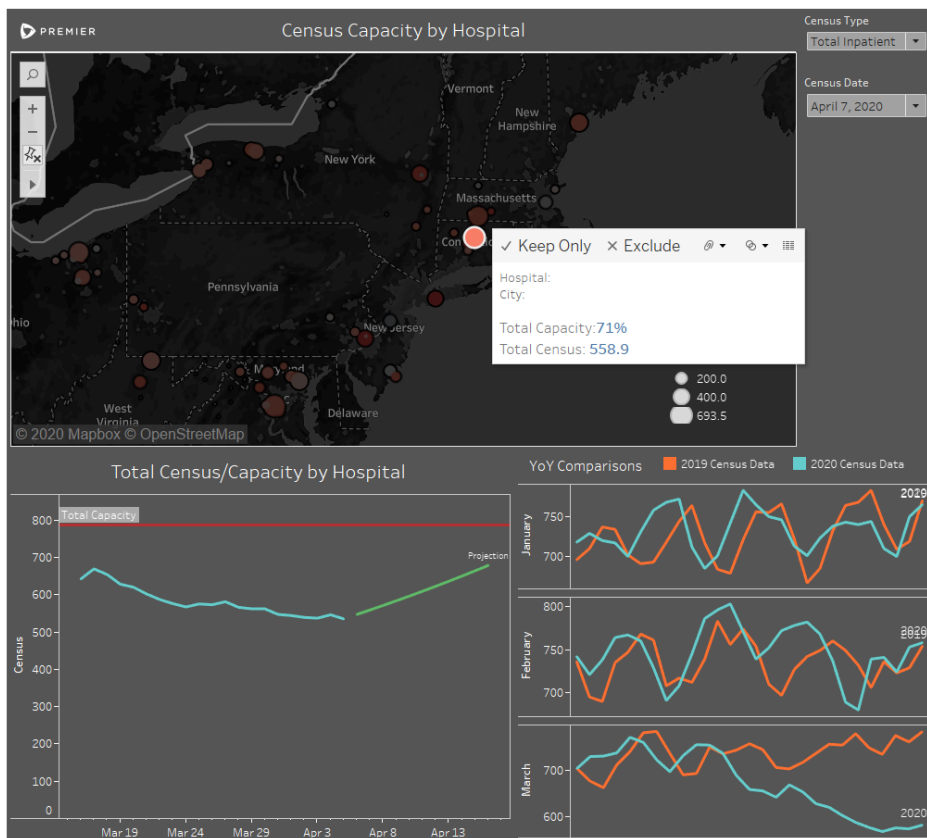
Considering that patients aren't typically confirmed cases for at least a week after showing symptoms, this early warning buys time to support containment and mitigation strategies, and lead surge preparations and coordination across all relevant stakeholders – all before patients arrive at the hospital for treatment.





Leverage predictive modeling to make actionable forecasts on surge.

Premier's integrated solution leverages clinical and public health information to create predictive models about demand, indicating the projected caseload for five to seven days for a health system, city, region or the nation.



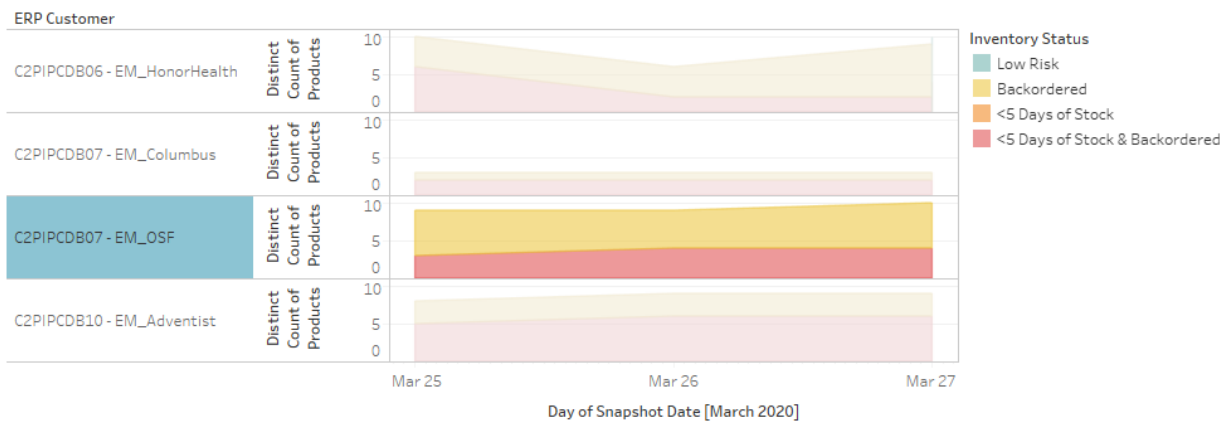


Strategy 3- Prioritize Supplies

Phase I available today in
Premier's ERP

Predict and identify the priority supply needs based on the acuity of the patient population.

N95 Inventory Status Trending



Detail

ERP Customer	Org	Asset Loc	Mfr ID	Item No	Item Desc	Days Of Stock	Days of Stock (Adjusted for COVID-19 Projection)	Inventory Status	On Hand Qty	On Order Authorized Qty
C2PIPCDB07 - EM_OSF	10100	10100-Main	201	3183001	MASK SRG ..	43	30.1	Backordered	39	33
				3183235	MASK N95 R	5	3.5	<5 Days of Stock & Backor..	40	240
					ESPIRATOR..	330	231	Backordered	440	480
				3183236	MASK N95 R	0	0	<5 Days of Stock & Backor..	0	880
					ESPIRATOR..	50	35	Backordered	800	1,760
				4972145	MASK RESP..	0	0	<5 Days of Stock & Backor..	0	72
	10200	10200-Main	201	3183235	MASK N95 ..	3	2.1	<5 Days of Stock & Backor..	10	40
				3183236	MASK N95 R	1	0.7	<5 Days of Stock & Backor..	92	60
					ESPIRATOR..	15	10.5	Backordered	2,804	400
			6072	10110094	MASK RESP..	0	0	<5 Days of Stock & Backor..	0	0
10250	10250-MAIN	13	10110077	MASK N95 R	108	75.6	Backordered	216	0	
				ESPIRATOR..	617	431.9	Backordered	103	0	
10300	10300-Main	201	3183236	MASK N95	1798	1258.6	Backordered	8,812	20	

Premier uses its comprehensive, vendor-agnostic supply data to develop a supply allocation model that predicts the number of disease cases over a seven-day period by county and models the supply levels a healthcare provider will need based on estimated case volume and typical surge demand.



Stay informed and ensure adherence to the latest evidence-based clinical guidance for best possible care.

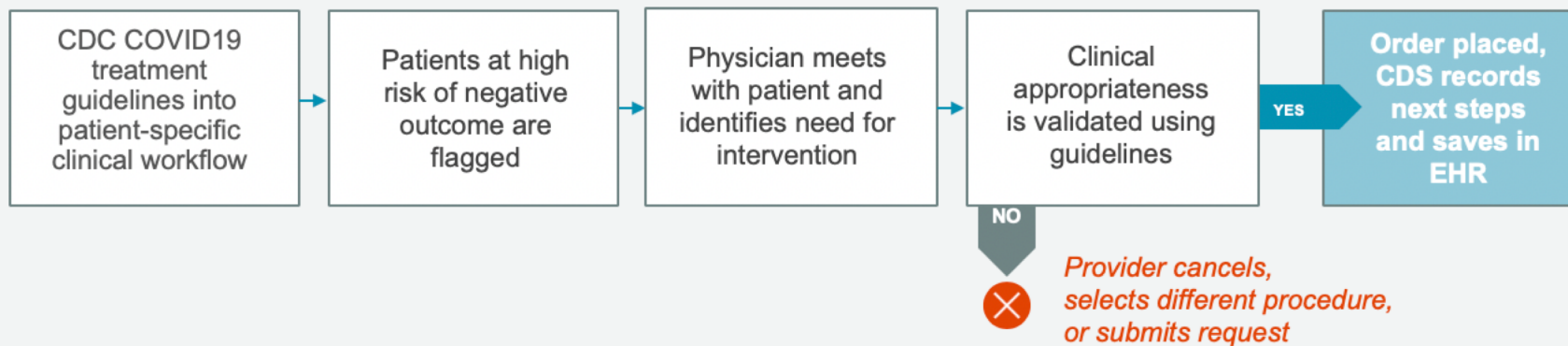
Premier's clinical decision support technology embeds the latest and most relevant clinical guidance into the workflow, allowing nurses and physicians to incorporate the most recent findings into their treatment protocols at the time that decisions are being made

Predictive Algorithms

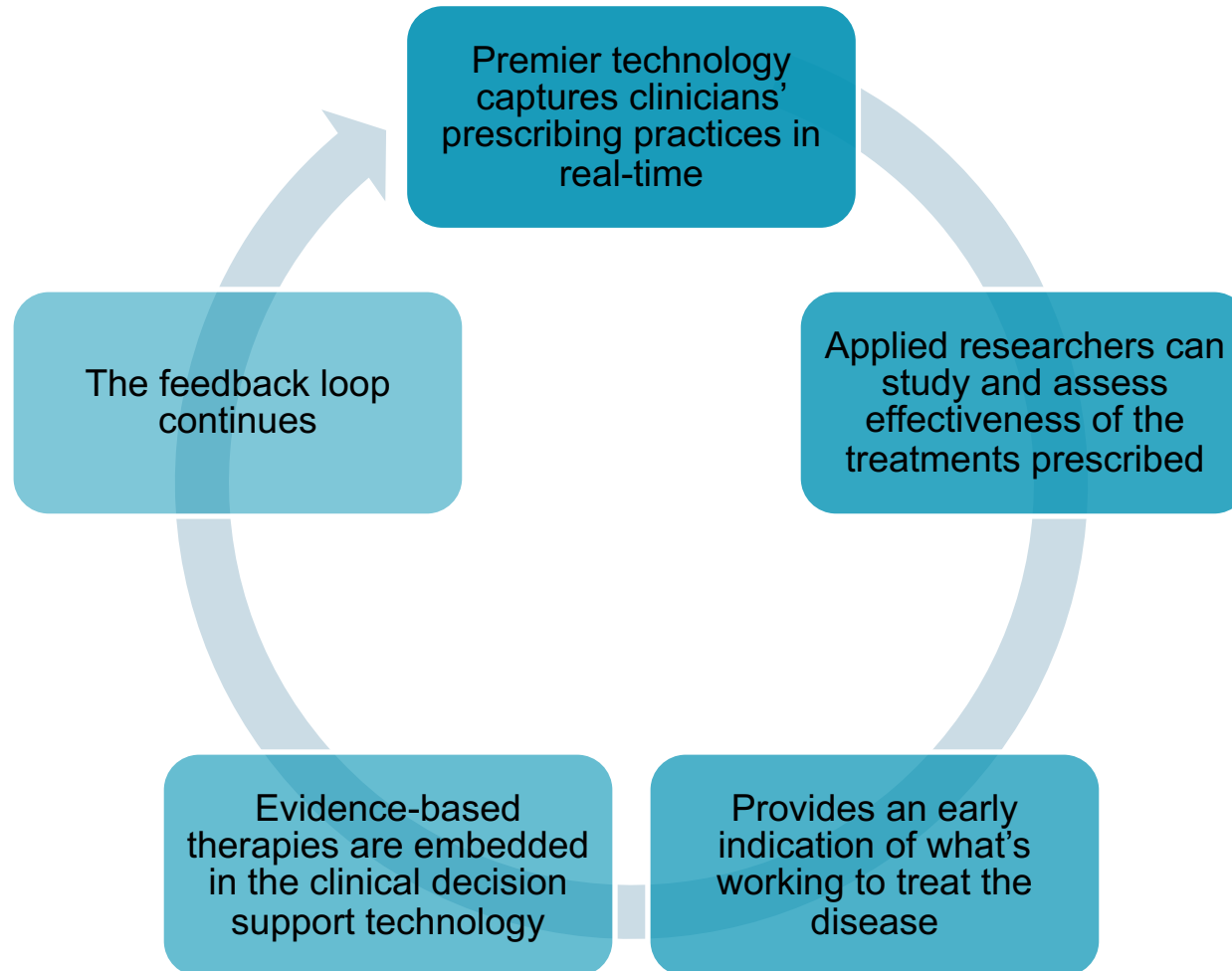


Workflow Technology

Here's how.



Observe and adjust therapies based on real-time research.





Rapidly deploy best practices across healthcare providers.

In addition to a real-time, national surveillance system, Premier is creating a COVID-19 Clinical Forum to rapidly scale learnings and best practices across the nation.



01

**Organizing
an Industry
Expert
Panel**

02

**Curating
Content of
Greatest
Need**

03

**Launch
Mobile-
enabled
Virtual
Session**

04

**Enhance
with Partner
Capabilities
for Mobile
Chat**

In high demand today & can be repurposed for the next crisis.